



## Adjustable foot peg kit for Kawasaki ZX-6R/RR Users Manual

Thank you for purchasing Ti-Force original parts. Please read the information below for safe use of our product.

### **! Caution !**

To prevent burns, work must be conducted only after the engine has properly cooled down.  
 To ensure the bike does not fall over as you work on it, make sure it is stood on level ground.  
 During the installation of the kit make sure that all parts are securely tightened to prevent from falling plate or loose master-cylinder. Pay special attention to the brake system, errors can cause serious injury.  
 After installation, make sure that the parts of the kit are not touching other parts.  
Some parts are loosely tightened at the time of shipment. Please make sure all parts are securely tightened during the installation.  
 Vibration can loosen the bolts while riding. Please regularly check all parts are securely tightened.  
 Especially after any fall accident, please make a thorough check.  
 This product is for standard motorbikes and those with our exhaust installed. There is possibility that this product cannot be installed when the motorbike has another non-standard exhaust, swing arm or frame, etc.  
 Do not dismantle or alter our product. (It causes loss of function, and could cause fatal accidents.)  
 Please note we cannot accept return of a kit when it has been illegally used or installed.  
 If the motorbike has had a fall and its frame has been damaged, the installation of the kit may not be possible.  
In case of accident and damage to our product, please do not use. The broken parts may cause harm to the rider.  
The accident might cause the exhaust to fall off the motorbike and thus fatal accident or injury.

- 【Spec】**
- 《Suitable motor bike》 '04- ZX-6R/RR
  - 《Position》 Nine positions available ( Fig. 1 )
  - 《Other info》 Shift Stroke of three levels adjustment (Fig.2)
    - For 20mmUP, STD or High shift  
( A-high, B-Standard, C-low )
    - Standard fitment or in the reverse position.
    - Passenger foot pegs can be used.

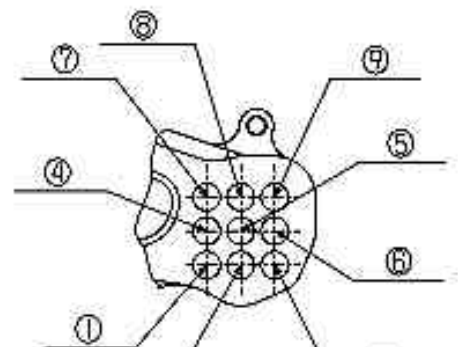
**【Required Tools etc.】**

- 《Tools》 Hexagon wrench 4mm, 5mm, 6mm, one each
- Spanner 12mm, 13mm one each
- Spanner 10mm, two
- Torque wrench, Radio Pliers, Spring puller
- 《Others required》 Gloves, Screw paste, grease, Cloth

**【Tightening Torque】**

Recommended Tightening Torque

Screw diameter	N-m	Kg f-m
M6 Bolt, Nut	10	1.0
M8 Bolt, Nut	22	2.2

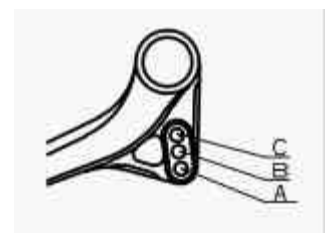


《Fig 1》 Change-side position

**1 Position confirmation**

Confirm the position.

0mm Back/ 0mm U P	10mm Back/ 0mm U P	20mm Back/ 0mm U P
0mm Back/10mm U P	10mm Back/10mm U P	20mm Back/10mm U P
0mm Back/20mm U P	10mm Back/20mm U P	20mm Back/20mm U P



《Fig 2》 Shift arm position

If you choose setting or position as in Fig 1, the shift rod can be installed at A and B as in Fig 2.  
 Strongly recommend to set position B (STD).

## 2 Remove STD foot peg from the motor bike body.

Remove the brake master ASSY and brake switch from the brake-side STD step.

For the shift side, remove the link arm from the STD link as only engine side change arm is used STD.

## 3 Attach the right-side step plate to the motor bike body.

(1) Remove the hexagon flanged bolts (No.29) and button screw (No. 23) which is holding the master cylinder stay. After applying the screw lock paste to the bolt, attach it to the place of your choice with the hexagon flanged bolt (No.29) and bottom bolt (No.23).

(2) Attach the reused STD parts to the foot peg.

- Master cylinder
- Brake light switch
- Button cap bolt x2

? Breather hose may bends depending on the position. If the hose bends, please cut the breather hose for the best length. Failure of this adjustment of breather hose may occur serious damage to the breaking system and serious injury.

(3) Adjust the brake light switch.

(Check the brake light comes on when you press the pedal.)

Note: If you are unable to adjust with the switch screw, change the angle of the switch stay and/or the brake arm side spring stay.

If you make adjustment to the switch stay, check that no parts interfere with others.

(4) Check no part touches the other parts.

- Check all bolts and nuts are securely tightened.
- It is essential you check the hose bent between the R master and fluid reservoir, as well as the brake hose mechanism, when the swing arm goes up and down.

## 4 Attach the left-side foot peg plate to the motor bike body

(1) Attach the peg to the body.

(2) Adjust the length of the change rod and position of the pedal.

Make sure the screws have more than 6mm engagement at all three change rods.

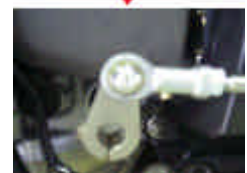
(3) Check no parts interfere with others.

Check all bolts and nuts are securely tightened.

## 5 Adjustment of change rod

Tighten the change rod and adjust the change pedal height. If the position sets and , take shift rod 40mm and if the position sets and , take shift rod 60mm. If the spherical bearing is too short or long, and you cannot make to your required heights, change the shift lod and angle of the change arm and adjust the length of the change rod.

- In case of reverse position, change the direction of change arm (see pic.1)



Pic1

## 6 Confirmation

(1) Check before run

- No parts interfere with others. (Especially moving parts.)
- All moving parts work smoothly.
- All bolts and nuts are securely tightened.
- If the rear brake works properly...
- If the brake light operates properly...

(2) Check after the run

- If the shift to each gear can be done smoothly.
- If all bolts and nuts are still securely tightened.

### 【About maintenance】

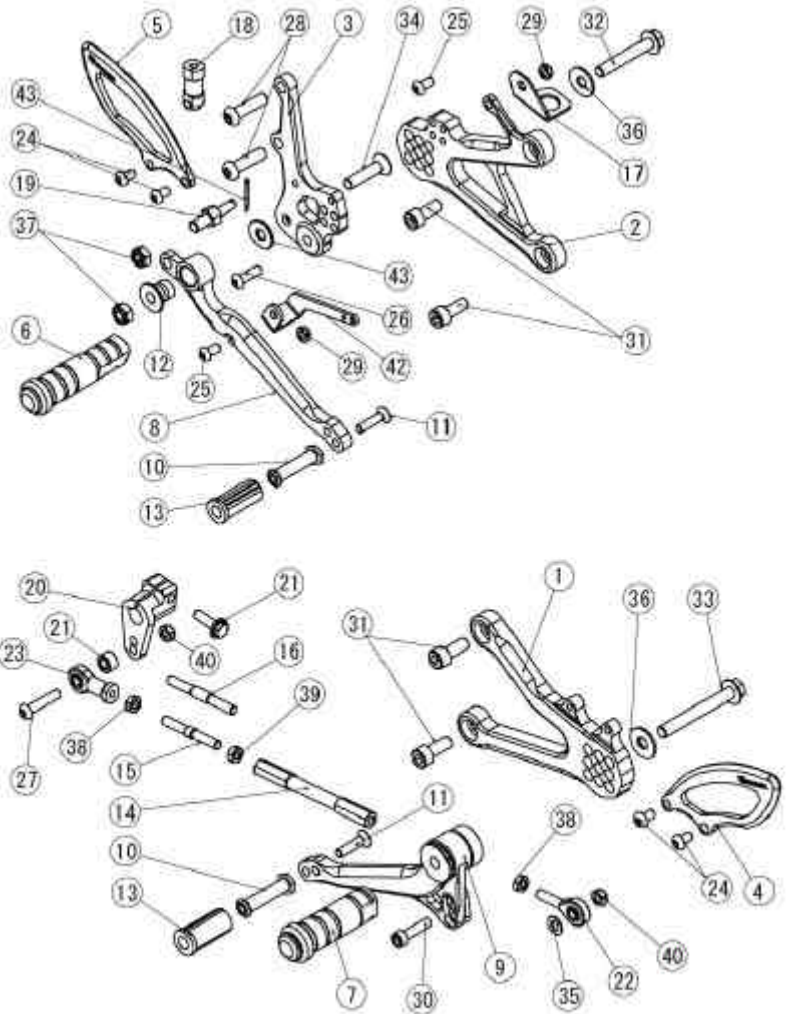
Please keep the bearing and spherical bearing parts oiled at all times to ensure smooth operation.

The bolts and nuts can be loosened by vibration. Please regularly tighten them. Especially after a crush, check the bolts and nuts.

**【Parts list】**

Utmost care is provided to the quality for the product. In case of ambiguity, stop using it immediately and contact us. Please contact below for inquiry on installation and maintenance, or claims.

No.	item name	qty.
1	LEFT SIDE STEP PLATE	1
2	RIGHT SIDE STEP PLATE	1
3	MASTER CYLINDER MOVING STAY	1
4	HEEL GUARD - L	1
5	HEEL GUARD - R	1
6	STEP BAR - R	1
7	STEP BAR - L	1
8	BRAKE PEDAL	1
9	CHANGE PEDAL PLATE	1
10	PEDAL END	2
11	CAP BOLT M6 X L25	2
12	PEDAL INNER COLLAR SUS1415	1
13	PEDAL END RUBBER	2
14	SHIFT ROD 160MM	1
15	SHIFT ROD 40MM	1
16	SHIFT ROD 60MM	1
17	SWITCH STAY	1
18	PUSH ROD ADJUST NUT	1
19	PUSH ROD PIN	1
20	CHANGE ARM	1
21	ALUMINUM COLLAR 12x6.2x8	1
22	SPHERICAL BALL JAM6	1
23	SPHERICAL BALL JAF6	1
24	BUTTON BOLT M6X10	4
25	BUTTON BOLT M6X12	2
26	BUTTON BOLT M6X20	1
27	BUTTON BOLT M6X30	1
28	BUTTON BOLT M8X30	2
29	U NUT (THREE TYPES)	2
30	CAP BOLT M6X25	1
31	CAP BOLT M8X20	4
32	HEXAGON FLANGED BOLT M8XL50	1
33	HEXAGON FLANGED BOLT M8XL65	1
34	BOLT M8X35	1
35	WASHER M6	1
36	WASHER M8X22X1.6	2
37	U NUT M8	2
38	NUT M6	2
39	NUT M6 L	1
40	U NUT M6R	2
41	COTTER PIN	1
42	SWITCH STAY	1
43	ALUMINUM COLLAR 22X8.2X2	1



TiForce Japan Co., Ltd.  
 13-25, Minami Ejima  
 Suzuka city, Mie  
 510-0235, Japan

81-593-873992 tel  
 81-593-873993 fax

<http://tiforce.co.jp>  
[sales@tiforce.co.jp](mailto:sales@tiforce.co.jp)