



Suzuki GSX-1300R Hayabusa High-Mount Type

Thank you for selecting and purchasing a TiForce exhaust system for your GSX-1300R High-Mount Type. TiForce is the world's finest titanium exhaust system available today. Please read the following instructions and materials to fully familiarize you with new exhaust system before getting started.

Before Installation

- Verify that all parts and accessories have been included (see list below).
 - Coat all exhaust pipe mating joints with anti-seize compound / lubricant.
 - Read and review these instructions, cautions, diagrams and images prior to starting any work.
1. Remove the lower fairing, tail lower fairing, seat and tail turn signal. Remove the lower radiator mounting bolts, loosen the upper bolts and pivot the radiator forward to provide more access to the exhaust nuts (flange nuts). Unbolt the oil cooler and move it out of the way. It might be necessary to disconnect the oil cooler for added clearance.
 2. Remove the existing exhaust system and save the flange nuts for reuse. Save the stock exhaust can mounting bolt and nut for the end can as well.
 3. Inspect the exhaust gaskets. Replace if necessary.
 4. Assemble the head pipes 1,2,3, and 4 into the collector assembly.
 5. Attach the assembled head pipe sections to the exhaust ports, but do not tighten the flange nuts fully, allowing for some adjustment in the remaining steps. Reuse the flange nuts saved from step 2 above. Make sure the ends of the head pipes fit flush and snug in the ports before tightening.
 6. Install the S bend to the front section of the collector.
 7. Remove the seat cowling and stock foot peg bracket stay of the end can side. Attach the supplied foot peg bracket stay using the supplied spacer B and saved bolts. Next, attach the supplied foot peg bracket and stock foot peg bar. (M8 x 20mm bolt)
 8. Slide the TiForce end can into place. Loosely attach the two rubber bands and stainless steel bands to the end can use the supplied 6mm hardware. Attach the rubber spring to the silencer upper joint. (See Fig.1)
 9. Loosely attach the stainless steel band to the foot peg bracket stay assembled step 7 using the supplied spacer A, bolt (M8-60mm), M8 nut and washer. (See Fig.2)
 10. Attach the supplied springs to all the joints, starting from the head pipes and working back to the end can.
 11. Loosely reinstall all parts removed step 1 except seat and tail turn signal. Make sure the exhaust system is free and clear of the bike. If necessary, adjust for proper clearance. Put supplied heat shield to the fairing to avoid melting the fairing.
 12. Remove the fairings reinstalled in step 12. Retighten hardware, starting from the exhaust pipe flange and stainless steel band.



13. Using some brake and contact cleaner on a clean rag, carefully wipe down the entire exhaust system to remove any residual oils, anti seize, fingerprints and dirt prior to starting the motor. Failure to clean the tubing and can may result permanent staining of the system when heated.
14. Go back and reinstall the radiator as per factory specifications. Verify fluid levels as needed.
15. Check that all hardware is tightened, and then start the motor and check for exhaust leak.
16. Attach the supplied turn signal to the seat fairing and reinstall the seat fairing and seat.

End

General Cautions For Exhaust System Installations

CAUTION –For your safety, carefully read these instructions and those above, and fully familiarize yourself with the content before beginning installation and use. Keep these instructions in a safe place for future reference. Install the exhaust system as explained in these instructions.

DANGER –when the motor is running, and shortly after it has been turned off, the motorcycle, the exhaust system and end-can will be hot. Severe burns, bodily injury and even death may result.

DANGER –Keep gasoline and other flammable materials away from the exhaust system at all times. Exposure of gasoline and to heat can lead to fire.

CAUTION –Stop the motorcycle should the exhaust system come in contact with people or animals. Never touch the exhaust system when hot. Direct contact with the system can cause burns.

DANGER –Allow the motor to cool before installing or removing the exhaust system. Working with a hot motor can lead to burns.

CAUTION –Stand the motorcycle on a flat and level surface and ensure that the motorcycle is stable before installing the exhaust system. Bodily injury and /or death could result to you or others if the motorcycle falls over. Damage may also result to the motorcycle or nearby property or equipment.

DANGER –Start and run the motorcycle in a well-ventilated area. With prolonged exposure to exhaust gas you run the risk of severe oxygen deficiencies, bodily injury or death may result.

CAUTION –Install the muffler only on the specified model of motorcycle. Improper installation will lead to loss of performance and or damage to the motorcycle.

CAUTION –Do not disassemble, modify or remodel this exhaust system.

TiForce Japan Co., Ltd	81-593-873992 tel	http://www.tiforce.co.jp
13-25,Minami Ejima	81-593-873993 fax	sales@tiforce.co.jp
Suzuka city,Mie		
510-0235, Japan		

(Parts List)

Exhaust head pipe	4	Collector assembly	1	Spacer A (10mmx22m)	2
Tail pipe	1	End can	1	Spacer B (35mmx24mm)	1
Hanger/Stay Arm G	1	stainless bands K	2	Exhaust bracket stay / C	1
Exhaust spring	7	Rubber pad	2	Foot peg bracket	1
M8 bolt (60mm)	1	M6 bolt (20mm)	2	Turn signals	2
M8 bolt (20mm)	1	M6 nut	2	Connectors	4
M8 nut	1	M6 washer	4	Heat shield	1
M8 washer	2				

Figure 1 - Assembly of Stainless Bands and Exhaust Hanger

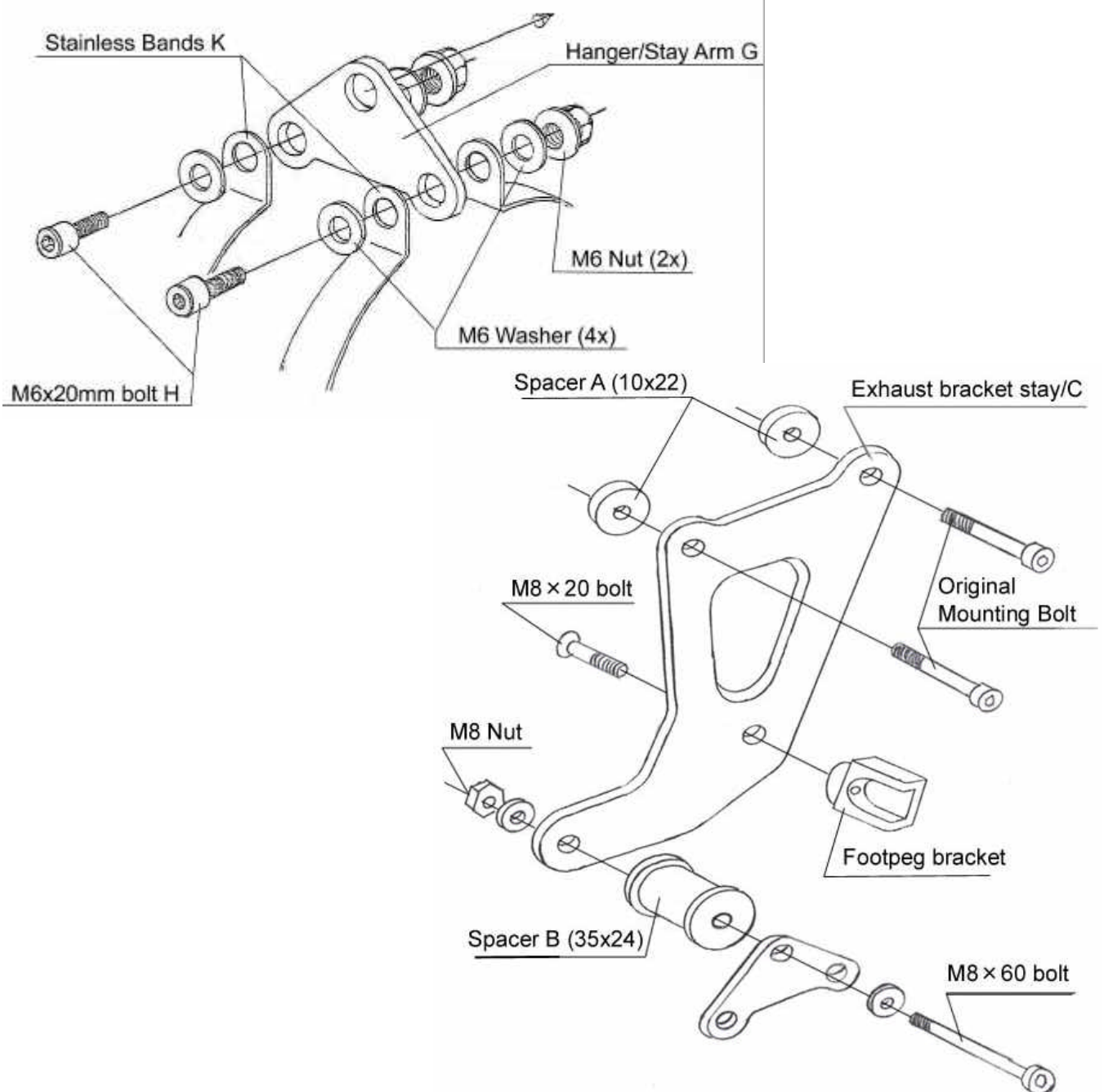


Figure2 GSXR-1300R Hanger Assembly