



## Suzuki '07- GSXR1000 Slash Cut Dual Slip-on (with baffles)

Thank you for selecting and purchasing a TiForce exhaust system for your Suzuki GSXR 1000. TiForce is the world's finest titanium exhaust system available today. Please read the following instructions and materials to fully familiarize yourself with your new exhaust system before getting started. Instructions are also available in Adobe Acrobat PDF format on the TiForce website ([www.tiforce.co.jp](http://www.tiforce.co.jp)).

### Before Installation

- Verify that all parts and accessories have been included (see list below).
- Coat all exhaust pipe matching joints with anti-seize compound / lubricant.
- Read and review these instructions, cautions, diagrams and images prior to starting any work.

1. Remove the right and left standard silencers.
2. Put the enclosed clamp band to the enclosed L and R megaphone. Then, attach this megaphone to the standard catalyze box. And tighten screw of the clamp band.
3. Make a hole (5mm) to the piling place of the stock pipe, TiForce megaphone and clamp band by the drill. Push an enclosed rivet to make them together in order to prevent taking off the megaphone. (See below drawing)

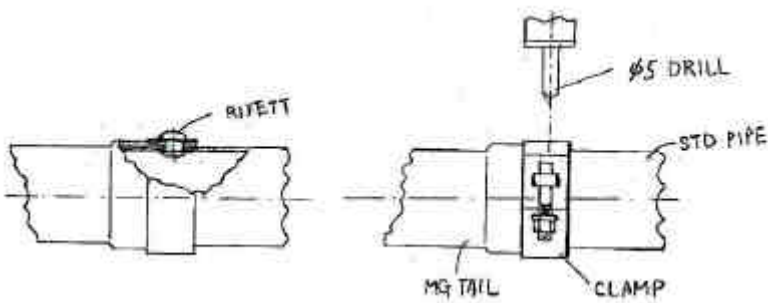
Failure to tighten the clamp band may result in danger of megaphone falling down.

4. Using some brake and contact cleaner on a clean rag, carefully wipe down the entire parts you installed to remove any residual oils, anti seize, fingerprints and dirt prior to starting the motor. **FAILURE TO CLEAN THE TUBING AND CAN MAY RESULT IN PERMANENT STAINING OF THE SYSTEM WHEN HEATED.**

5. Start the motor and check for exhaust leaks.

### Enclosed parts

- 1) Right megaphone x 1 pc
- 2) Left megaphone x 1 pc
- 3) clamp band x 2 pcs.
- 4) rivet x 2 pc



For North America Users: Replacement parts availability at US office, #205-583-8601 voice, [tech@tiforce.co.jp](mailto:tech@tiforce.co.jp)



### General Cautions for Exhaust System Installations

**CAUTION** –For your safety, carefully read these instructions and those above, and fully familiarize yourself with the content before beginning installation and use. Keep these instructions in a safe place for future reference. Install the exhaust system as explained in these instructions.

**DANGER** –when the motor is running, and shortly after it has been turned off, the motorcycle, the exhaust system and end-can will be hot. Severe burns, bodily injury and even death may result.

**DANGER** –Keep gasoline and other flammable materials away from the exhaust system at all times. Exposure of gasoline and to heat can lead to fire.

**CAUTION** –Stop the motorcycle should the exhaust system come in contact with people or animals. Never touch the exhaust system when hot. Direct contact with the system can cause burns.

**DANGER** –Allow the motor to cool before installing or removing the exhaust system. Working with a hot motor can lead to burns.

**CAUTION** –Stand the motorcycle on a flat and level surface and ensure that the motorcycle is stable before installing the exhaust system. Bodily injury and /or death could result to you or others if the motorcycle falls over. Damage may also result to the motorcycle or nearby property or equipment.

**DANGER** –Start and run the motorcycle in a well-ventilated area. With prolonged exposure to exhaust gas you run the risk of severe oxygen deficiencies, bodily injury or death may result.

**CAUTION** –Install the muffler only on the specified model of motorcycle. Improper installation will lead to loss of performance and or damage to the motorcycle.

**CAUTION** –Do not disassemble, modify or remodel this exhaust system.

---

TiForce Japan Co., Ltd	81-593-701881 tel	<a href="http://www.tiforce.co.jp">http://www.tiforce.co.jp</a>
8160-1,Kou-cho	81-593-701882 fax	<a href="mailto:sales@tiforce.co.jp">sales@tiforce.co.jp</a>
Suzuka city,Mie		
513-0836, Japan		