



## Suzuki '07- GSXR1000 Full System

Thank you for selecting and purchasing a TiForce exhaust system for your Suzuki GSXR 1000. TiForce is the world's finest titanium exhaust system available today. Please read the following instructions and materials to fully familiarize yourself with your new exhaust system before getting started. Instructions are also available in Adobe Acrobat PDF format on the TiForce website ([www.tiforce.co.jp](http://www.tiforce.co.jp)).

### Before Installation

- Verify that all parts and accessories have been included (see list below).
- Coat all exhaust pipe matching joints with anti-seize compound / lubricant.
- Read and review these instructions, cautions, diagrams and images prior to starting any work.
- TiForce recommends the use of light-duty thread locking agent (ie Blue Loctite) on all exhaust mounting fasteners – especially the fasteners on passenger footrest brackets and all silencers mounting hardware.

1. Remove the faring lowers, and remove the L and R existing silencer and tailpipe.
2. Disconnect the wire of the exhaust device.
3. Remove the cat. assy of the under the engine. Save the standard bolt for reuse.
4. Remove the existing passenger's foot peg L and R. Attach the enclosed silencer sub stay to the right side where the right passenger's foot peg was attached (use M8x20mmx3 and M8washer). And attach the enclosed passenger's foot peg stay to the left side where the left passenger's foot peg was attached (use M8x20mmx3 and M8washer). (See Drawing.1)
5. Remove the stay of the engine lower and remove/pull off the rubber bush from the stay just you removed. And attached this removed rubber bush to the enclosed tail pipe sub stay. Attach this assembled tail pipe sub stay to the place where the standard stay mounted. (See right Pic.)

(use standard three bolts removed in this step)



6. Unbolt the radiator upper mounting bolt and remove the lower support. Move the radiator forwards and remove the existing head pipes. Save the standard bolts for reuse. Leave hoses connected.
7. Assemble the enclosed head pipes 1,2,3 and 4 by matching the 2-1 joint. Do not install the exhaust springs at this time. Attach the assembled head pipe sections to the exhaust ports, but do not tighten the bolts fully. Reuse the standard bolts saved from above. Make sure the ends of the head pipes fit snug in the ports before tightening.
8. Install the tail joint and tail pipe to the joints. Do not install the exhaust springs yet. Jiggle the whole assemble for better fitting. Lightly attach the tail pipe stay to the sub stay attached in step 4. (Use standard bolt saved in step 3 and enclosed M8 flange lock nut) Push in the enclosed rubber bush to the tailpipe.
9. Insert the TiForce silencer to the tail pipe. Put silencer band, band rubber and silencer stay to the silencer (Use supplied M6x20mmx2, M6 washerx4m M6nutx2). And attach the whole to the silencer sub stay attached in step. 4 by using enclosed aluminum collar and bolt (M8x90mm,M8washer and M8 flange lock nut). (See Drawing.1)
10. Attach the supplied springs to all the joints. Lightly reinstall the lower faring removed in step 1 and make sure the exhaust system is free and clear of the faring. If necessary, adjust for proper clearance. Use a spring puller to prevent damage to the springs that could lead to future failure.

For North America Users: Replacement parts availability at US office, #205-583-8601 voice, [tech@tiforce.co.jp](mailto:tech@tiforce.co.jp)

11. Removed the lower fairing reinstalled in step 10.
12. Securely tighten all fasteners in this order (from exhaust pipe flange to silencer stay)
13. Using some brake and contact cleaner on a clean rag, carefully wipe down the entire exhaust system to remove any residual oils, anti seize, fingerprints and dirt prior to starting the motor. **FAILURE TO CLEAN THE TUBING AND CAN MAY RESULT IN PERMANENT STAINING OF THE SYSTEM WHEN HEATED.**
14. Check that all fasteners are tightened per specifications, then start the motor and check for exhaust leaks. And check the ECR alarm off.
15. Reinstall the fairing.

#### How to switch off the ECU light

1. Remove the seat and detach the Black coupler of the ECU.
2. Unlock the coupler and detach the orange cover.  
Please pay attention not to break the pin of the cover.
3. Please disconnect the BLACK AND WHITE WIRE ON THE BLACK CONNECTOR. FIFTH FROM LEFT LOOKING AT ECU (BLACK CONNECTOR TO THE LEFT) IT IS BETWEEN THE PINK/BLACK AND PINK/WHITE.

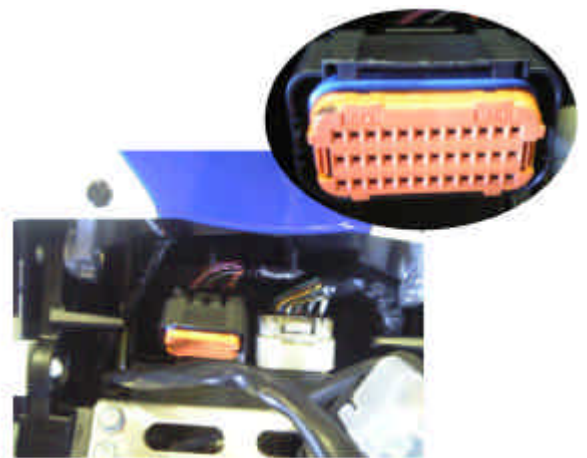
(In order to prevent the damages to the motorbike, do not disconnect any other colored wire.)

4. Reinstall the coupler to the ECU. And put the insulating tape over the disconnected wire.

(Caution)

TiForce passenger footrest brackets are NOT designed to bear the full weight of a rider or passenger. **DO NOT STAND-UP ON THE PASSENGER FOOTRESTS!**

TiForce passenger footpegs and brackets are designed to be lightweight and are to be used as "footrests" only.



End



### General Cautions for Exhaust System Installations

**CAUTION** –For your safety, carefully read these instructions and those above, and fully familiarize yourself with the content before beginning installation and use. Keep these instructions in a safe place for future reference. Install the exhaust system as explained in these instructions.

**DANGER** –when the motor is running, and shortly after it has been turned off, the motorcycle, the exhaust system and end-can will be hot. Severe burns, bodily injury and even death may result.

**DANGER** –Keep gasoline and other flammable materials away from the exhaust system at all times. Exposure of gasoline and to heat can lead to fire.

**CAUTION** –Stop the motorcycle should the exhaust system come in contact with people or animals. Never touch the exhaust system when hot. Direct contact with the system can cause burns.

**DANGER** –Allow the motor to cool before installing or removing the exhaust system. Working with a hot motor can lead to burns.

**CAUTION** –Stand the motorcycle on a flat and level surface and ensure that the motorcycle is stable before installing the exhaust system. Bodily injury and /or death could result to you or others if the motorcycle falls over. Damage may also result to the motorcycle or nearby property or equipment.

**DANGER** –Start and run the motorcycle in a well-ventilated area. With prolonged exposure to exhaust gas you run the risk of severe oxygen deficiencies, bodily injury or death may result.

**CAUTION** –Install the muffler only on the specified model of motorcycle. Improper installation will lead to loss of performance and or damage to the motorcycle.

**CAUTION** –Do not disassemble, modify or remodel this exhaust system.

---

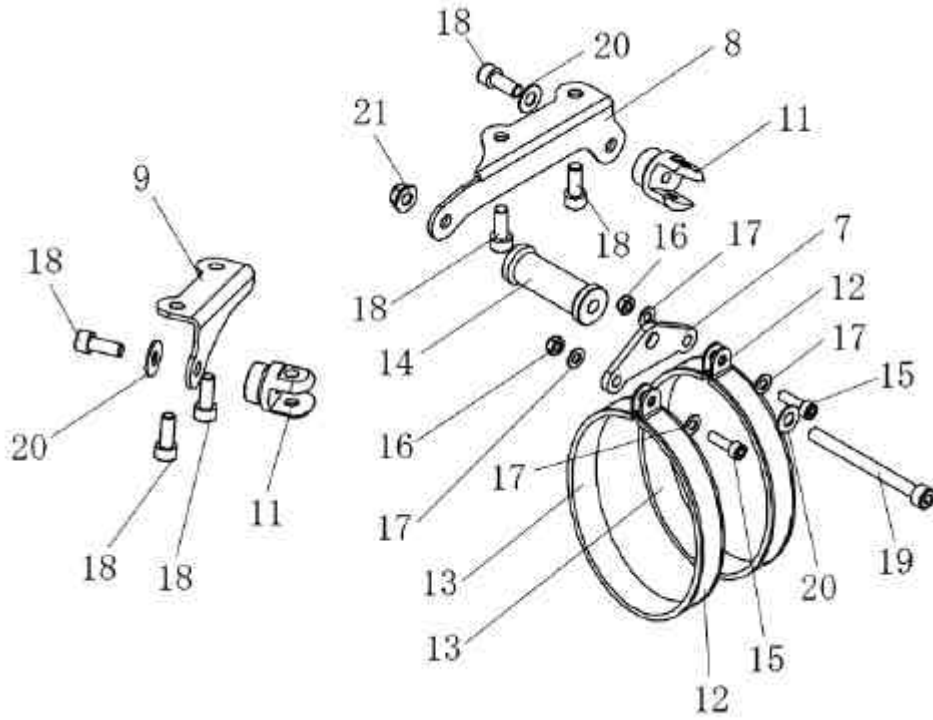
TiForce Japan Co., Ltd      81-593-701881 tel      <http://www.tiforce.co.jp>  
8160-1,Kou-cho              81-593-701882 fax      [sales@tiforce.co.jp](mailto:sales@tiforce.co.jp)  
Suzuka city,Mie  
513-0836, Japan

#### Enclosed Parts List

1	Head pipes #1-#4	1ea	2	2-1 joint(#1-#2)	1pc	3	2-1 joint (#3-#4)	1pc
4	Tail joint	1pc	5	Tail pipe	1pc	6	Silencer	1pc
7	Silencer stay	1pc	8	Silencer sub stay	1pc	9	Passenger's foot peg stay	1pc
10	Tail pipe sub stay	1pc	11	Passenger's foot peg holder	2pcs	12	Silencer band	2pcs
13	Silencer band rubber	2pcs	14	Aluminum collar	1pc	15	M6x20 cap bolt	2pcs
16	M6 nut	2pcs	17	M6 washer	4pcs	18	M8x20 cap bolt	6pcs
19	M8x90 cap bolt	1pcs	20	M8 washer	3pcs	21	M8 flange lock nut	2pcs
22	Joint short spring	9pcs	23	Bush rubber	1pc			

(Left)

(Right)



Drawing 1) how to attach the silencer sub-stay and silencer band

