

Adjustable foot peg kit for Yamaha '06 YZF-R6 Users Manual

Thank you for purchasing Ti-Force original parts. Please read the information below for safe use of our product.

! Caution!

To prevent burns, work must be conducted only after the engine has properly cooled down.

To ensure the bike does not fall over as you work on it, make sure it is stood on level ground.

During the installation of the kit make sure that all parts are securely tightened to prevent from falling plate or loose master-cylinder. Pay special attention to the brake system, errors can cause serious injury.

After installation, make sure that the parts of the kit are not touching other parts.

Some parts are loosely tightened at the time of shipment. Please make sure all parts are securely tightened during the installation.

Vibration can loosen the bolts while riding. Please regularly check all parts are securely tightened.

Especially after any fall accident, please make a thorough check.

This product is for standard motorbikes and those with our exhaust installed. There is possibility that this product can not be installed when the motor bike has another non-standard exhaust, swing arm or frame, etc.

Do not dismantle or alter our product. (It causes loss of function, and could cause fatal accidents.)

Please note we can not accept return of a kit when it has been illegally used or installed.

If the motorbike has had a fall and its frame has been damaged, the installation of the kit may not be possible.

In case of accident and damage to our product, please do not use. The broken parts may cause harm to the rider.

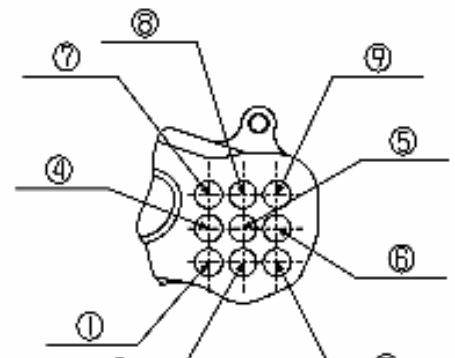
The accident might cause the exhaust to fall off the motorbike and thus fatal accident or injury.

- 【Spec】 《Suitable motor bike》 '06- YZF-R6
 《Position》 Nine positions available (Fig. 1)
 《Other info》 Shift Stroke of two levels adjustment (Fig. 2)
 • (high/Standard)
 * Standard fitment or in the reverse position.
 * Passenger foot peg can be used.

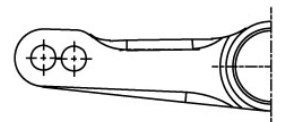
- 【 Required Tools etc.】
 《Tools》 Hexagon wrench 4mm, 5mm, 6mm: one each
 Spanner 12mm, 13mm: one each
 Spanner 10mm: two
 Torque wrench, Radial punch, spring puller
 《Others required》 Gloves, Screw paste, grease, Cloth

- 【Tightening Torque】
 Recommended Tightening Torque

Screw diameter	N-m	Kg f-m
M6 Bolt, Nut	10	1.0
M8 Bolt, Nut	22	2.2



《Fig 1》 Change-side position



《Fig 2》 Shift stroke position

1 Position confirmation

Confirm the position.

0mm Back/ 0mm U P	10mm Back/ 0mm U P	20mm Back/ 0mm U P
0mm Back/ 10mm U P	10mm Back/ 10mm U P	20mm Back/ 10mm U P
0mm Back/ 20mm U P	10mm Back/ 20mm U P	20mm Back/ 20mm U P

2 Remove STD foot peg from the motor bike body.

Remove the brake master ASSY and brake switch from the brake-side STD foot peg.

Remove the foot peg plate of the shift side. Next, remove the change pedal. Remain the standard change arm, change rod and nut of the engine side at the previous position for reuse.

3 Attach the right-side step plate to the motor bike body.

(1) Remove the cap bolt (No.27) that holds the step plate. Apply the screw paste to this bolt. Then, attach it to the place of your choice of the off set plate. .

(2) Attach the brake switch and master cylinder to the step.

- Attach the master cylinder using the supplied button bolt (No.22)
- Attach the brake light switch to the switch stay (No.14).
- Breather hose may bends depending on the position. If the hose bends, please cut the breather hose for the best length. Failure of this adjustment of breather hose may occur serious damage to the breaking system and serious injury.

(3) Adjust the brake light switch. (Check the brake light comes on when you press the pedal.)

Note: If you are unable to adjust with the switch screw, change the angle of the switch stay and/or the brake arm side spring stay.

If you make adjustment to the switch stay, check that no parts interfere with other parts.

(4) Check no parts touches the other parts.

- Check all bolts and nuts are securely tightened.
- It is essential you check the hose bent between the R master and fluid reservoir, as well as the brake hose mechanism, when the swing arm goes up and down.
- Check the brake pedal is free and clear from the silencer when you push the brake pedal
Note: Failure of having enough room/clearance for braking may occur serious damage and injury.

4 Attach the left-side foot peg plate to the motor bike body

(1) Attach the peg to the body.

(2) Adjust the length of the change rod and position of the pedal.

Make sure the screws have more than 6mm engagement at the all three change rods.

(3) Check no parts interfere with others.

Check all bolts and nuts are securely tightened.

5 Adjustment of change rod

Tighten the change rod and adjust the change pedal height. If the spherical bearing is too short or long, and you can not make to your required heights, change the angle of the change arm and adjust the length of the change rod.

- In case of reverse position, change the direction of change arm and cut the interfered lower faring where the change rod touches.

6 Confirmation

(1) Check before run

- No parts interferes other parts. (Especially moving parts.)
- All moving parts work smoothly.
- All bolts and nuts are securely tightened.
- If the rear brake works.
- If the brake light operates.

(2) Check after the run

- If the shift to each gear can be done smoothly.
- If all bolts and nuts are still securely tightened.

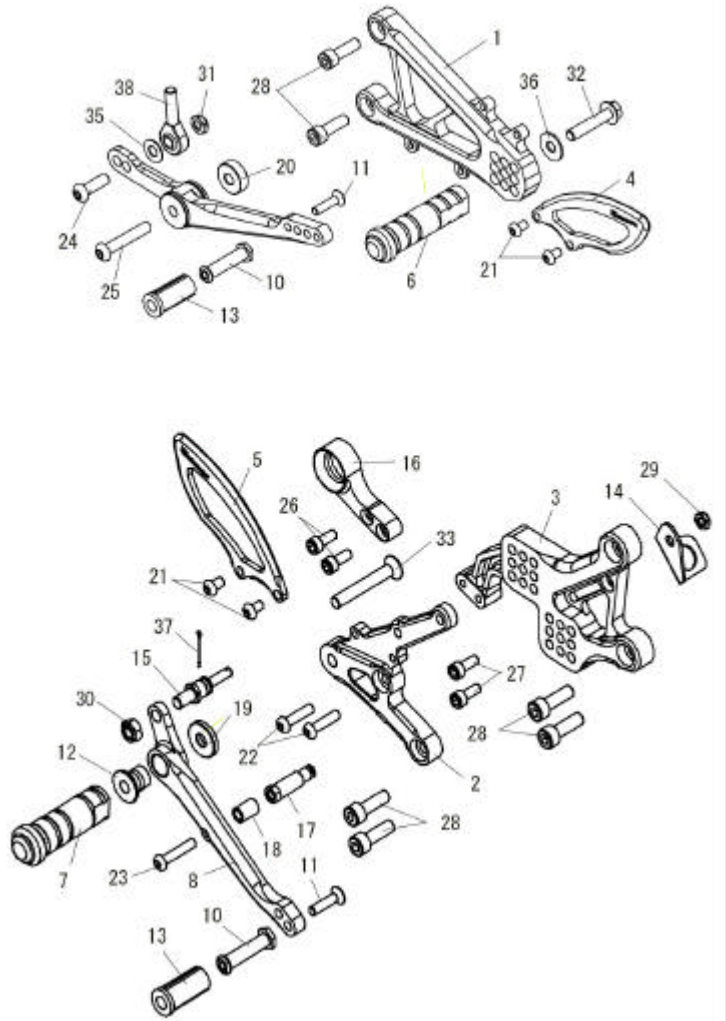
【 About maintenance 】

Please keep the bearing and spherical bearing parts oiled at all times to ensure smooth operation. The bolts and nuts can be loosened by vibration. Please regularly tighten them. Especially after a fall, check the bolts and nuts.

【Parts list】

Utmost care is provided to the quality for the product. In case of ambiguity, stop using it immediately and contact us. Please contact below for inquiry on installation and maintenance, or claims.

No.	item name	qty.
1	LEFT SIDE STEP PLATE	1
2	RIGHT SIDE STEP PLATE	1
3	OFFSET PLATE	1
4	HEEL GUARD (L)	1
5	HEEL GUARD (R)	1
6	STEP BAR (R)	1
7	STEP BAR (L)	1
8	BRAKE PEDAL	1
9	CHANGE PEDAL PLATE	1
10	PEDAL END	2
11	FLUSH BOLT M6 X 25	2
12	PEDAL INNER COLLAR SUS1415	1
13	PEDAL END RUBBER	2
14	SWTICH STAY	1
15	PUSH ROD PIN	1
16	MUFFLER STAY	1
17	SWITCH HOOK	1
18	ALUMINUM COLLAR 10X6.2X10	1
19	ALUMINUM COLLAR 22X8X4	1
20	ALUMINUM COLLAR 24X8X8	1
21	BUTTON BOLT M6X10	4
22	BUTTON BOLT M6X25	2
23	BUTTON BOLT M6X30	1
24	BUTTON BOLT M8X25	1
25	BUTTON BOLT M8X45	1
26	CAP BOLT M6X15	2
27	CAP BOLT M6X25	2
28	CAP BOLT M8X25	6
29	U NUT (M6R)	1
30	U NUT (M8)	1
31	U NUT (M8R)	1
32	FLANGE BOLT M8X40	1
33	FLUSH BOLT M6X25	2
34	FLUSH BOLT M8X55	1
35	WASHER M8X22X1.6	1
36	WASHER M8X22X1.6	1
37	SPLIP PIN 2X20	1
38	Spherical bearing	1



TiForce Japan Co., Ltd.

sales@tiforce.co.jp

<http://www.tiforce.co.jp>

8160-1, Kou-cho, Suzuka city, Mie 513-0836, Japan

Tel: 81-593701881

Fax: 81-593701882