

Adjustable foot peg kit for Suzuki '05 GSX-R1000 Users Manual

Thank you for purchasing Ti-Force original parts. Please read the information below for safe use of our product.

! Caution !

To prevent burns, work must be conducted only after the engine has properly cooled down.
 To ensure the bike does not fall over as you work on it, make sure it is stood on level ground.
 During the installation of the kit make sure that all parts are securely tightened to prevent from falling plate or loose master-cylinder. Pay special attention to the brake system, errors can cause serious injury.
 After installation, make sure that the parts of the kit are not touching other parts.
Some parts are loosely tightened at the time of shipment. Please make sure all parts are securely tightened during the installation.
 Vibration can loosen the bolts while riding. Please regularly check all parts are securely tightened.
 Especially after any fall accident, please make a thorough check.
 This product is for standard motorbikes and those with our exhaust installed. There is possibility that this product cannot be installed when the motorbike has another non-standard exhaust, swing arm or frame, etc.
 Do not dismantle or alter our product. (It causes loss of function, and could cause fatal accidents.)
 Please note we cannot accept return of a kit when it has been illegally used or installed.
 If the motorbike has had a fall and its frame has been damaged, the installation of the kit may not be possible.
In case of accident and damage to our product, please do not use. The broken parts may cause a harm to the rider.
The accident might cause the exhaust to fall off the motorbike and thus fatal accident or injury.

- 【Spec】 《Suitable motor bike》 '05 GSX-R1000
 《Position》 Nine positions available (Fig. 1)
 《Other info》 Shift Stroke of three levels adjustment (Fig. 2)
 • For 20mmUP, High shift and Standard shift only
 (A-high, B-Standard, C-low)

Standard fitment or in the reverse position. Passenger foot pegs can be used.

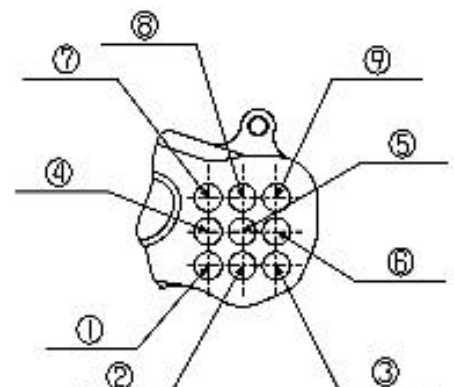
【Required Tools】

- 《Tools》 Hexagon wrench 4mm, 5mm, 6mm, one of each
 Spanner 12mm, 13mm one of each
 Spanner 10mm, two of each
 Torque wrench, Plier, Spring puller
 《Others required》 Gloves, Screw stop paste, grease, Cloth

【Tightening Torque】

Recommended Tightening Torque

Screw diameter	N-m	Kgf-m
M6 Bolt, Nut	10	1.0
M8 Bolt, Nut	22	2.2

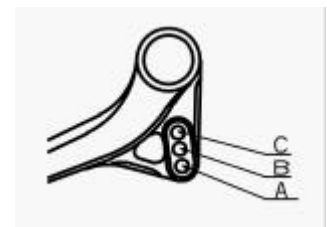


《Fig 1》 Change-side position

1 Position confirmation

Confirm the position.

0mm Back/ 0mm U P	10mm Back/ 0mm U P	20mm Back/ 0mm U P
0mm Back/10mm U P	10mm Back/10mm U P	20mm Back/10mm U P
0mm Back/20mm U P	10mm Back/20mm U P	20mm Back/20mm U P



《Fig 2》 Shift arm position

If you choose setting or position as in Fig 1,
 The shift rod can be installed at A and B as in Fig 2.
 If you choose or , please move the motor bike body shift lever by one
 Position to the front.

2 Remove STD foot peg from the motor bike body.

Remove the brake master ASSY and brake switch from the brake-side STD step.

For the shift-side, engine-side change arm only requires the STD, therefore remove the link arm from the STD link.

3 Attach the right-side step plate to the motor bike body.

(1) Remove the hexagon flanged bolts (No.32) and button screw (No. 26) which is holding the master cylinder stay. After applying the screw lock paste to the bolt, attach it to the place of your choice with the hexagon flanged bolt (No.32) and bottom bolt (No.26).

(2) Change the STD parts for the foot peg to the one you use.

- Master cylinder
- Stop switch
- Button cap bolt x2

(3) For the change-side only, insert the collar (No.22) between the frame and L-side step plate (No.1), and tighten with the cap-bolt (No. 30)

(4) Adjust the brake light switch. (Check the brake light comes on when you press the pedal.)

Note: If you are unable to adjust with the switch screw, change the angle of the switch stay and/or the brake arm side spring stay.

If you make adjustment to the switch stay, check that no parts interfere with other parts.

*For and position, pay attention not to contact to the exhaust and switch stay each other.

*For and position, pay attention not to contact to the step plate and switch stay each other.

(5) Check no part touches the other parts.

- Check all bolts and nuts are securely tightened.
- It is essential you check the hose bent between the R master and fluid reservoir, as well as the brake hose mechanism, when the swing arm goes up and down.

4 Attach the left-side foot peg plate to the motor bike body

(1) Attach the peg to the body.

(2) Adjust the length of the change rod and position of the pedal.

Make sure the screws have more than 6mm engagement at the all three change rods.

(3) Check no parts interfere with others.

Check all bolts and nuts are securely tightened.

5 Adjustment of change rod

Tighten the change rod and adjust the change pedal height. If the spherical bearing is too short or long, and you cannot make to your required heights, change the shift rod and the angle of the change arm and retry to adjust the length of the change rod.

- In case of reverse position, change the direction of change arm. (Pic. 1)

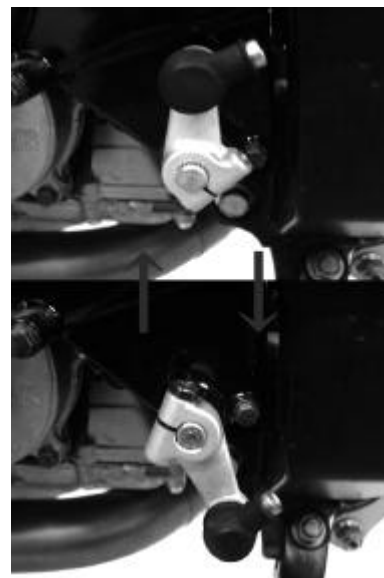
6 Confirmation

(1) Check before run

- No parts interfere other parts. (Especially moving parts.)
- All moving parts work smoothly.
- All bolts and nuts are securely tightened.
- If the rear brake works.
- If the brake light operates.

(2) Check after the run

- If the shift to each gear can be done smoothly.
- If all bolts and nuts are still securely tightened.



Pic 1

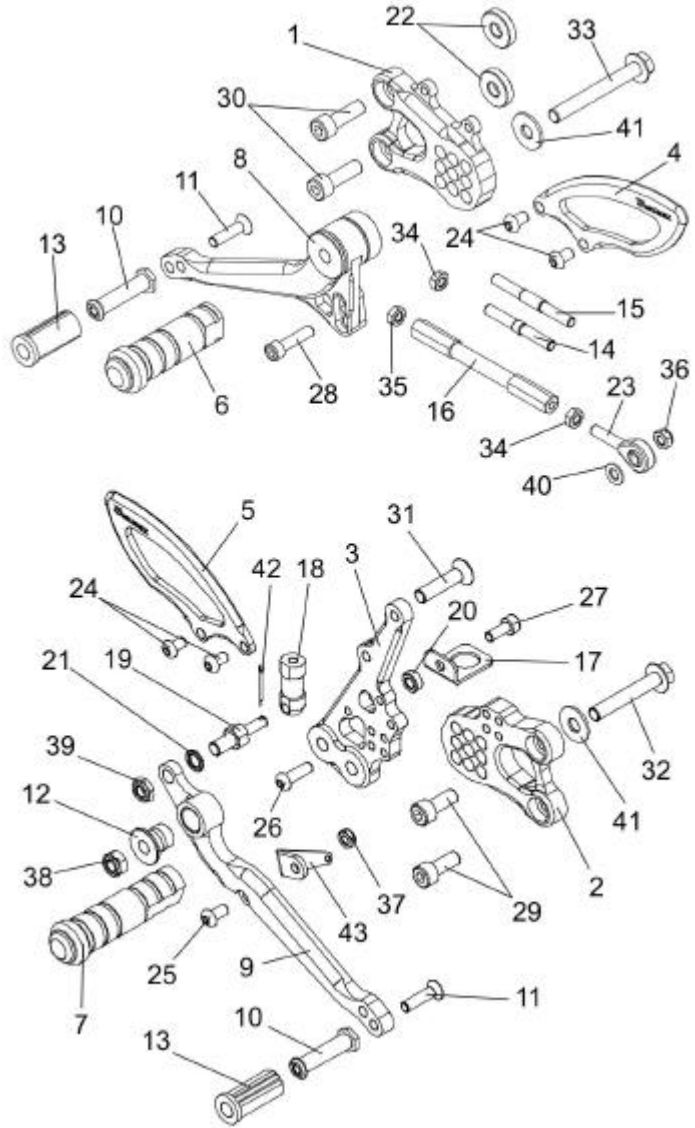
【Maintenance】

Please keep the bearing and spherical bearing parts oiled at all times to ensure smooth operation. The bolts and nuts can be loosened by vibration. Please regularly tighten them. Especially after a fall, check the bolts and nuts.

【Parts list】

Utmost care is provided to the quality for the product. In case of ambiguity, stop using it immediately and contact us. Please contact below for inquiry on installation and maintenance, or claims.

No.	item name	qty.
1	STEP PLATE (LEFT)	1
2	STEP PLATE (RIGHT)	1
3	MASTER CYLINDER STAY	1
4	HEEL GUARD (LEFT)	1
5	HEEL GUARD(RIGHT)	1
6	STEP BAR (LEFT)	1
7	STEP BAR (RIGHT)	1
8	CHANGE PEDAL	1
9	BRAKE PEDAL	1
10	PEDAL BAR	2
11	CAP BOLT M6XL25	2
12	PEDAL INNER COLLAR	1
13	PEDAL RUBBER	2
14	SHIFT ROD 50MM	1
15	SHIFT ROD 60MM	1
16	SHIFT ROD 105MM	1
17	SWITCH STAY 1	1
18	PUSH ROD ADJUST NUT	1
19	PUSH ROD PIN	1
20	COLLAR 12X6.2X5	1
21	COLLAR 13X8.2X2	1
22	COLLAR 22X8.2X5	2
23	SPHERICAL BEARING	1
24	BUTTON BOLT M6XL10	4
25	BUTTON BOLT M6XL12	1
26	BUTTON BOLT M6XL20	1
27	CAP BOLT M6XL15	1
28	CAP BOLT M6XL25	1
29	CAP BOLT M8XL20	2
30	CAP BOLT M8XL25	2
31	CAP BOLT M8XL35	1
32	HEXAGON FLANGED BOLT M8XL50	1
33	HEXAGON FLANGED BOLT M8XL65	1
34	NUT M6	2
35	NUT M6L	1
36	ROCK NUT M6R	1
37	THIN ROCK NUT M6	1
38	ROCK NUT M8	1
39	THIN ROCK NUT M8	1
40	WASHER M6	1
41	WASHER M8	2
42	RATE PIN 2X20	1
43	SWTICH STAY	1



TiForce Japan Co., Ltd.
 8160-1,Kohanba,Kou-cho,
 Suzuka city,Mie
 513-0836, Japan

81-593-701881 tel
 81-593-701882 fax

<http://www.tiforce.co.jp/>
sales@tiforce.co.jp